



GROW

PUBLIC SCHOOLS

GPS Executive Leadership Report



Entry Plan Timeline & Deliverables



Entry Plan Timeline

September 1, 2022

90 Day Deliverables

January 1, 2023

End of Year Deliverables

October 15, 2022

June 1, 2023

45 Day Deliverables

Begin Long-term Strategic Planning Process



45 Day Deliverables (9/1)

1. Prioritize current academic growth & achievement needs
2. Stakeholder communication & engagement
 - a. Leadership Advisory Council
 - b. Grow Network
 - c. Families
 - d. External partners
3. BC high school project growth and expansion final recommendations



90 Day Deliverables (10/15)

1. Focus to re-establish academic & culture of excellence
2. Stakeholder communication & engagement
 - a. All Faculty & Staff
3. Plan for growth and expansion for current network
4. Implementation of network-wide professional development
5. Emerging themes





Spring & Fall Achievement Data Update

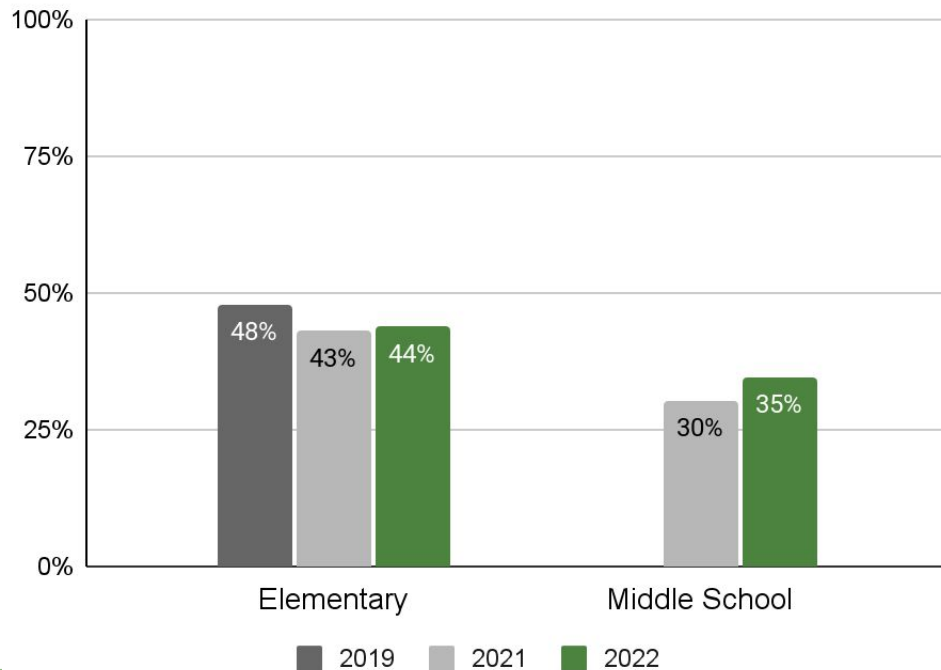


SBAC 2022 Data

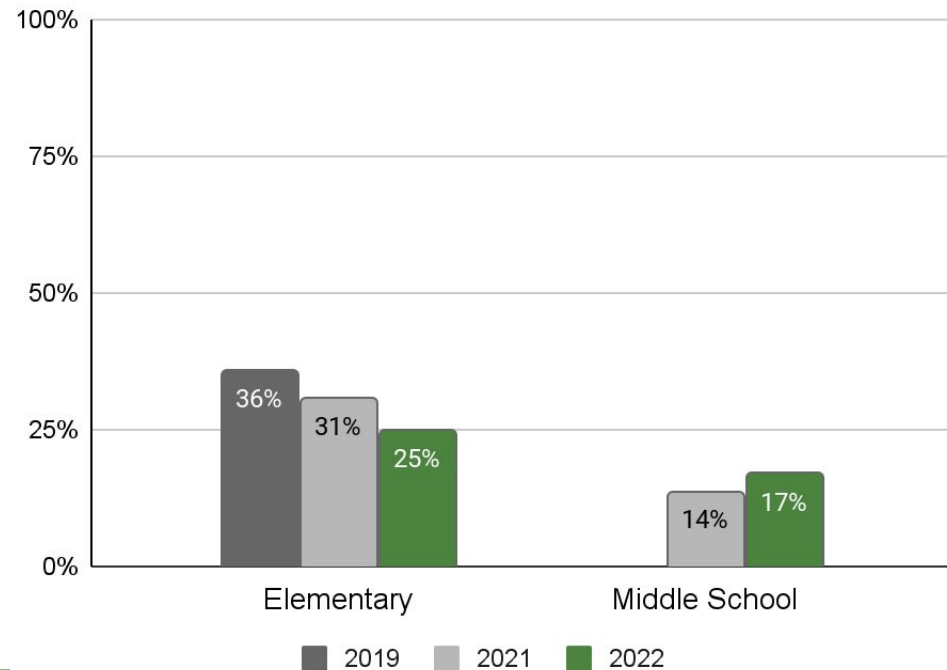


Grow Academy Shafter - SBAC Meeting or Exceeding

Shafter English Language Arts

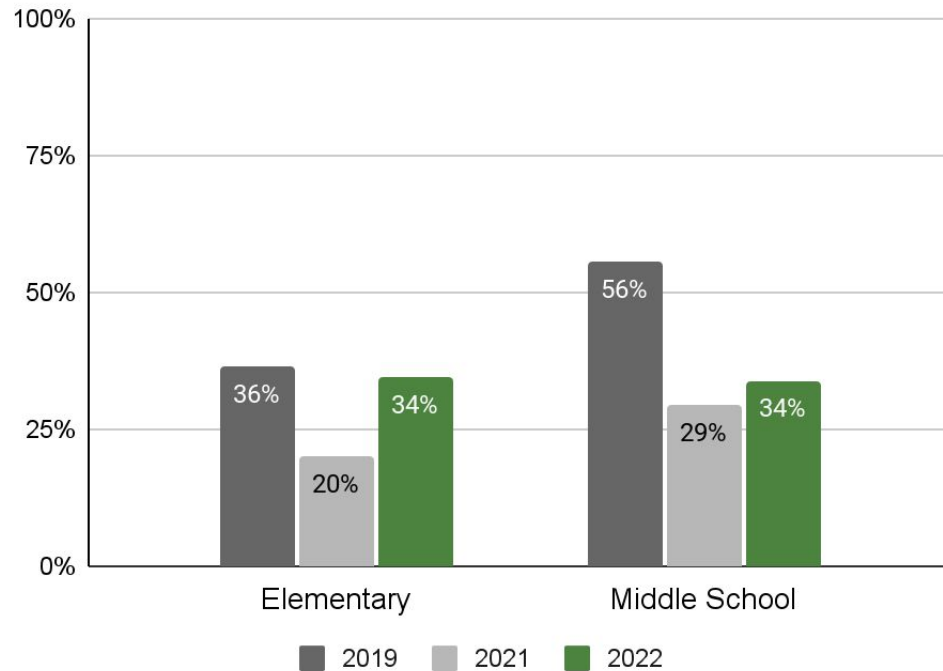


Shafter Math

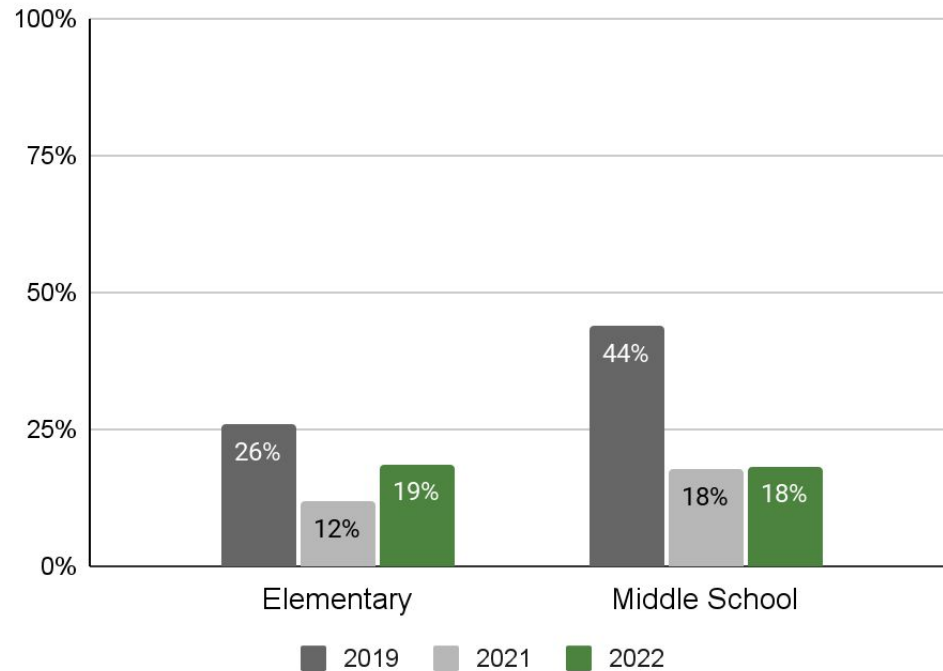


Grow Academy Arvin- SBAC Meeting or Exceeding

Arvin English Language Arts



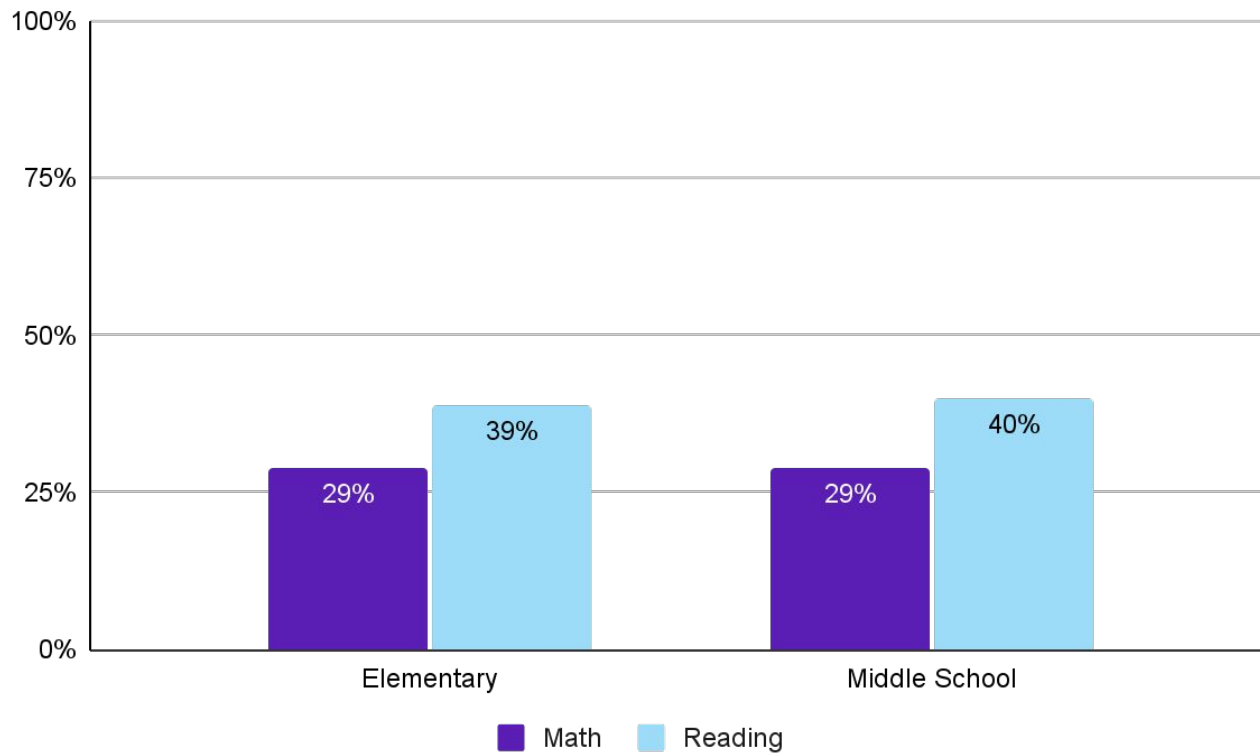
Arvin Math



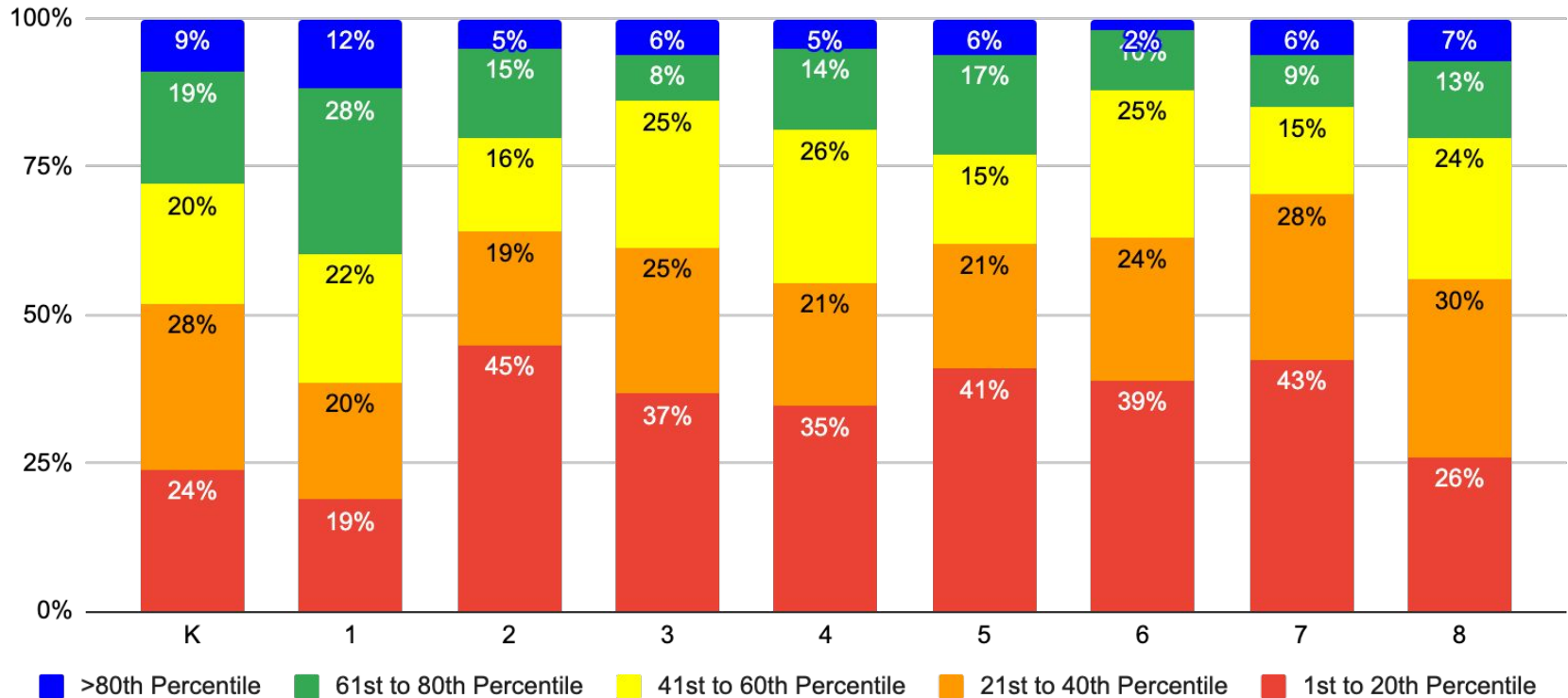
NWEA Fall 2022



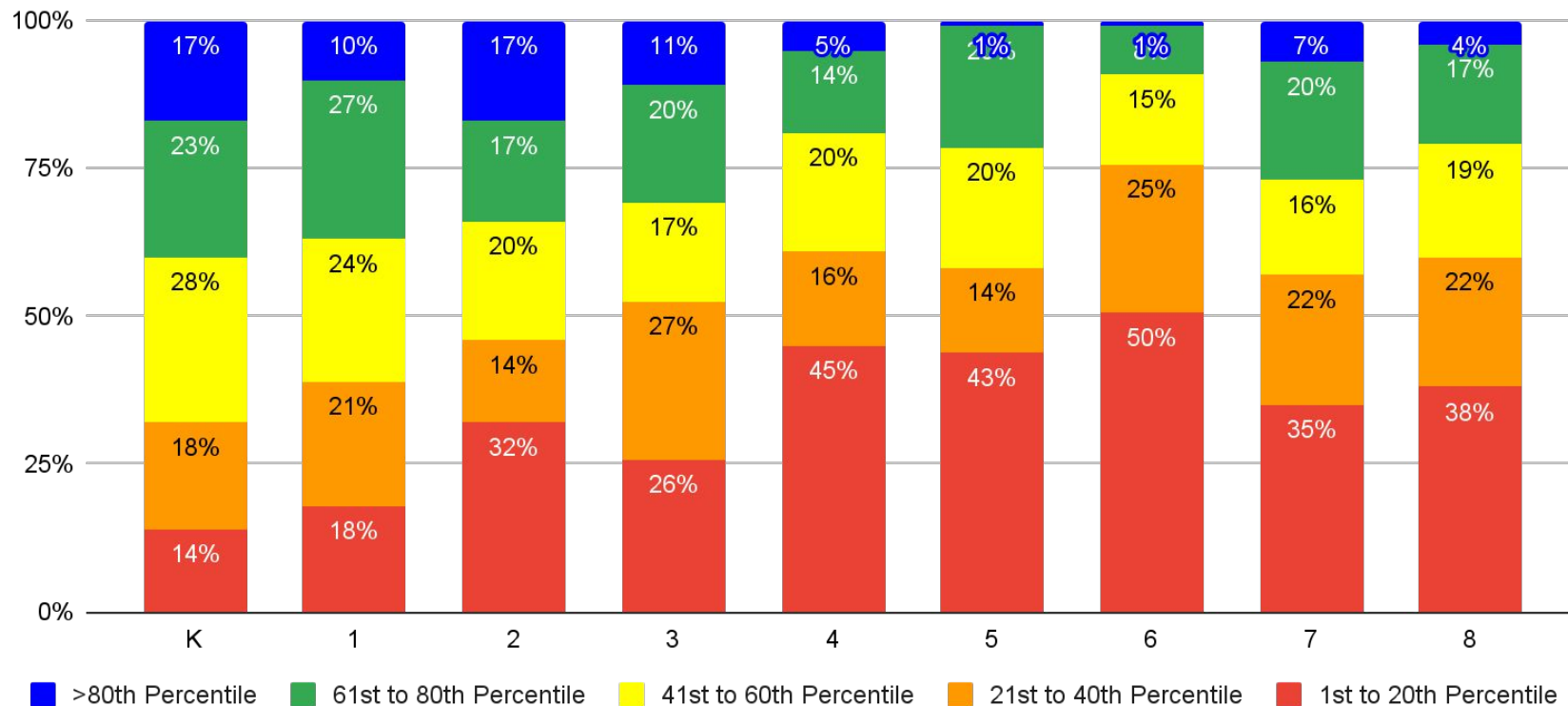
NWEA Proficiency



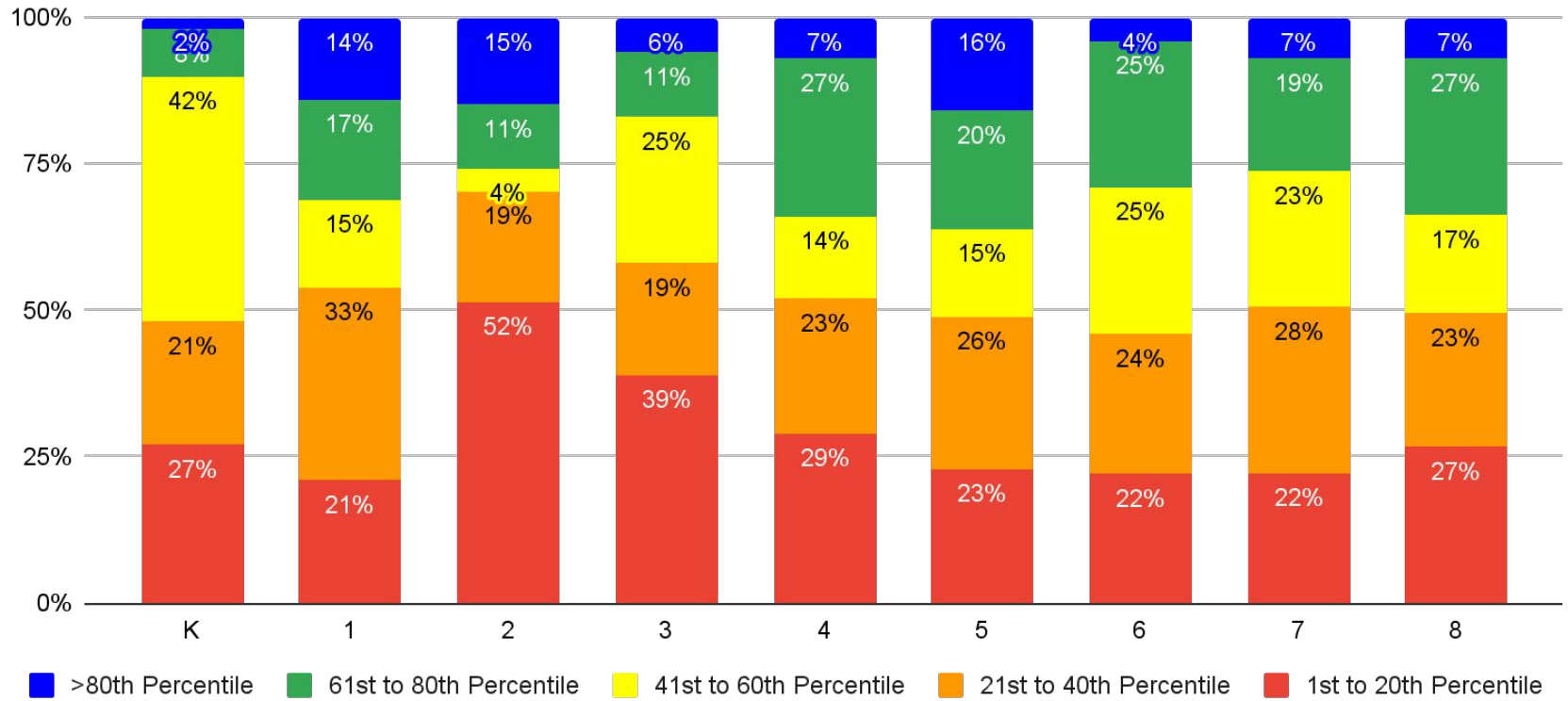
Arvin Math



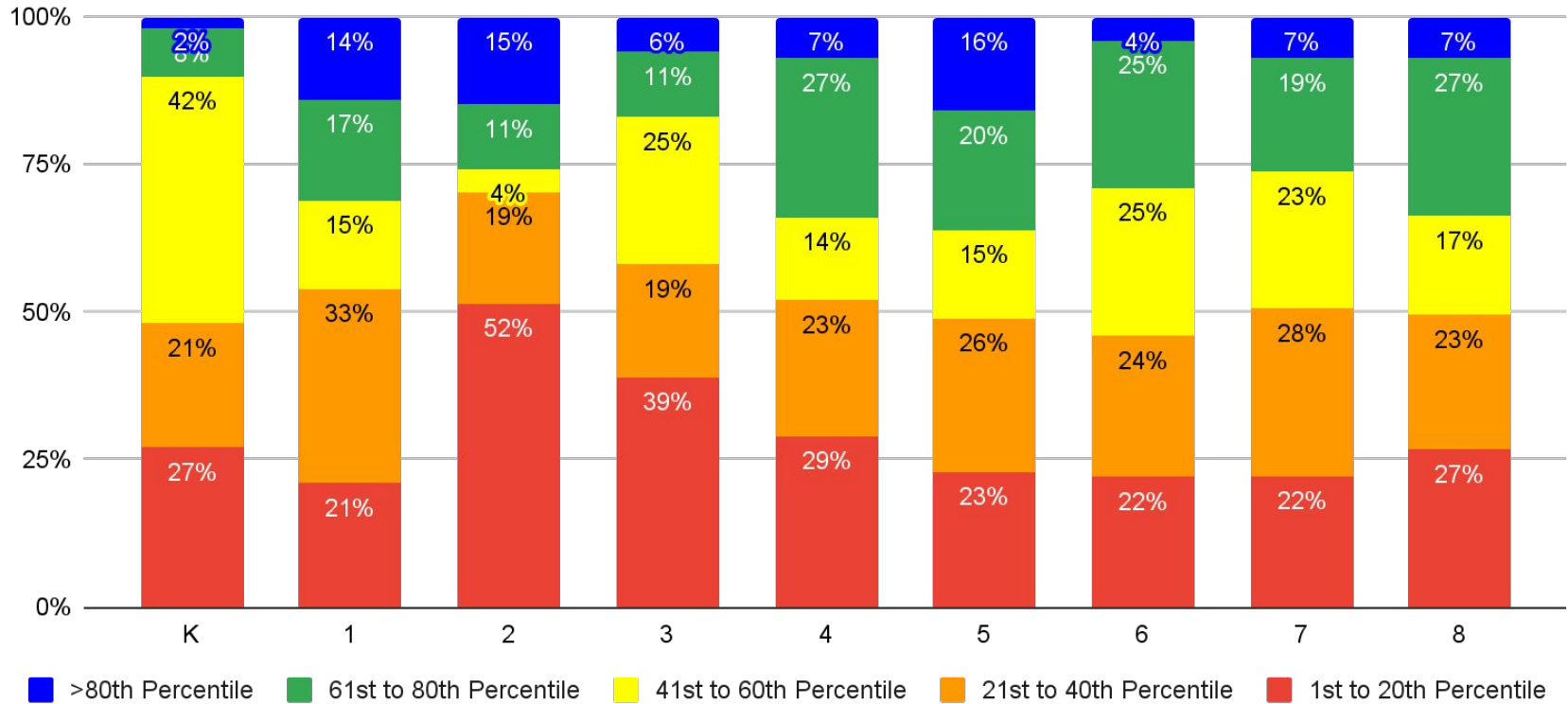
Shafter Math



Arvin Reading



Shafter Reading



Quarter 1 Action Plan

1. Aligning professional develop network-wide
2. Planning based on student readiness in key learning structures (core instruction, literacy block, and learning lab)
3. K-2 Foundational Literacy Skills
4. Focused Math and ELA Instruction





Growth & Expansion



Growth and Expansion

- Phase 1
 - Analysis of needs and feasibility
- Phase 2
 - Planning, design, and finance
- Phase 3
 - Board and key stakeholder review and next steps



Thank You!



GROW
PUBLIC SCHOOLS